

Met-Ex[®] Expanded Metal



Met-Ex[®] Product Features

Available ex stock in mild steel, aluminium and stainless steel.

Some sizes also stocked in pre-galv, and the stock mild steel over 1.2mm thick can be hot dip galvanised at an extra cost [minimum order quantity applies].

The flat sheet of metal is first cut then stretched apart in one single operation to form the diamond shaped holes. This process increases the strength to weight ratio of the metal from which it is expanded.

Met-Ex[®] expanded metal is lighter per m² and stronger per kg than the sheet of metal from which it is made. With Met-Ex[®] expanded metal there is no interweaving, interslotting, brazing or welding. In other words there is nothing to work loose or fray either through vibration or as a consequence of heavy impact.

Even when cut into irregular shapes and left unframed, Met-Ex[®] does not fray or unravel.

With no welds or interwoven strands, Met-Ex expanded metal shows excellent corrosion resistance, especially when hot dipped galvanized, plastic coated or anodised [made in aluminium only].

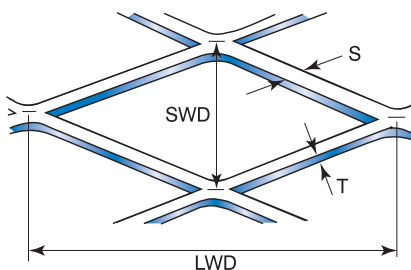
The knuckles formed by the cutting and expanding process support weight and withstand stress better than joints or welds. Used as the sides or as inserts in containers it allows air circulation without compromising strength or security.

Met-Ex[®] allows free passage of light, ventilation and sound, greatly increases the amount of metal surface exposed to the atmosphere for efficient and rapid heat diffusion and is a highly efficient conductor of electricity.

Please contact us for your requirements in other materials and for different sizes.

Ordering & Specifying

Raised :	Specify (Raised) For Rigidity
Flattened :	Specify (Flat) For Flexibility
Material:	Mild Steel, Aluminium, Stainless Steel, Pre-Galv
Nomenclature:	Material, LWD x SWD, T, S, Raised or Flat
Example:	A30121222R



KEY

- LWD - Long Way of Diamond
- SWD - Short Way of Diamond
- T - Material Thickness
- S - Strand Width

When ordering or specifying Met-Ex[®], remember that the long way of the diamonds run across the short way of the sheet.

Maximum sheet width is 1200mm. Regular sheet length is 2400mm.

Special order lengths available on negotiation.

Mild Steel (all prices exclude GST & Freight)

Item#	Size	Thickness	Strand	Flat/ Raised	Sheet Size	Part No	Weight	% Open Area	Opening Size approx
MX0060	20 x 6	1.0	1.7	R	1200 x 2400	M2061017R	13	43	15 x 5
MX0062	30 x 12	1.2	2.2	R	1200 x 2400	M30121222R	10	63	27 x 9
MX0064	30 x 12	1.6	3.0	R	1200 x 2400	M30121630R	18.4	50	27 x 9
MX0066	40 x 18	1.6	3.0	R	1200 x 2400	M40181630R	12.3	67	35 x 14
MX0068	50 x 24	2.0	3.0	R	1200 x 2400	M50242030R	11.5	75	43 x 18
MX0070	50 x 24	3.0	4.3	R	1200 x 2400	M50243043R	22	64	43 x 18
MX0056	10 x 6	0.8	1.2	F	1200 x 2400	M1060812F	7.4	60	7 x 4
MX0057	12.5 x 6	1.0	1.2	F	1200 x 2400	M12561012F	9.2	60	10 x 5
MX0059	20 x 6	1.0	1.7	F	1200 x 2400	M2061017F	13	60	15 x 5
MX0061	30 x 12	1.2	2.2	F	1200 x 2400	M30121222F	10	63	27 x 9
MX0063	30 x 12	1.6	3.0	F	1200 x 2400	M30121630F	18.4	50	27 x 9
MXBARB	30 x 12	1.6	3.0	F	900 x 600	M30121630B	3.5	50	27 x 9
MX0065	40 x 18	1.6	3.0	F	1200 x 2400	M40181630F	12.3	67	35 x 14
MX0067	50 x 24	2.0	3.0	F	1200 x 2400	M50242030F	11.5	75	43 x 18
MX0069	50 x 24	3.0	4.3	F	1200 x 2400	M50243043F	22	64	43 x 18

All thicknesses in mild steel from 1.2 and over can be hot dip galvanised as an extra (Minimum order value applies)

404GP/ Stainless Steel (all prices exclude GST & Freight)

Item#	Size	Thickness	Strand	Flat/ Raised	Sheet Size	Part No	Weight	% Open Area	Opening Size approx	\$/ Sheet
MX0073	30 x 12	1.2	1.6	R	1200 x 1200	S30121216R	4	73	27 x 9	
MX0075	40 x 18	1.2	2.0	R	1200 x 1200	S40181220R	3.4	78	35 x 14	
MX0072	30 x 12	1.2	1.6	F	1200 x 1200	S30121216F	4	73	27 x 9	
MX0074	40 x 18	1.2	2.0	F	1200 x 1200	S40181220F	3.4	78	35 x 14	

Galvanised (all prices exclude GST & Freight)

Item#	Size	Thickness	Strand	Flat/ Raised	Sheet Size	Part No	Weight	% Open Area	Opening Size approx
MX0033	30 x 12	1.2	2.2	R	1200 x 2400	G30121222R•	10.1	63	27 x 9
MX0038	40 x 18	1.6	3.0	R	1200 x 2400	G40181630R•	12.3	67	35 x 14
MX0050	50 x 24	2.0	3.0	R	1200 x 2400	G50242030R*	11.5	75	43 x 18
MX0052	50 x 24	3.0	4.3	R	1200 x 2400	G50243043R*	22	64	43 x 18
MX0032	30 x 12	1.2	2.2	F	1200 x 2400	G30121222F•	10.1	63	27 x 9
MX0034	30 x 12	1.6	3.0	F	1200 x 2400	G30121630F*	18.4	50	27 x 9
MX0037	40 x 18	1.6	3.0	F	1200 x 2400	G40181630F•	12.3	67	35 x 14
MX0049	50 x 24	2.0	3.0	F	1200 x 2400	G50242030F*	11.5	75	43 x 18
MX0045	50 x 24	3.0	4.3	F	1200 x 2400	G50243043F*	22	64	43 x 18

• = Pre-galv (dull)

*Hot-dip Galvanised after expansion (shiny)

Aluminium (all prices exclude GST & Freight)

Item#	Size	Thickness	Strand	Flat/ Raised	Sheet Size	Part No	Weight	% Open Area	Opening Size approx
MX0004	6 x 3	0.7	0.8	R	1200 x 800	A06030708R	1	47	3 x 1
MX0006	10 x 6	0.9	1.2	R	1200 x 2400	A1060912R	2.9	60	7 x 4
MX0008	12.5 x 6	0.9	1.2	R	1200 x 2400	A12560912R	2.9	60	10 x 5
MX0010	20 x 6	0.9	1.2	R	1200 x 2400	A2060912R	2.9	60	15 x 5
MX0013	30 x 12	1.2	2.2	R	1200 x 2400	A30121222R	3.5	63	27 x 9
MX0019	40 x 18	1.2	2.5	R	1200 x 2400	A401812250R	2.7	72	35 x 14
MX0024	50 x 24	3.0	4.3	R	1200 x 2400	A50243043R	8.8	64	43 x 18
MX0005	10 x 6	0.9	1.2	F	1200 x 2400	A1060912F	2.9	60	7 x 4
MX0007	12.5 x 6	0.9	1.2	F	1200 x 2400	A12560912F	2.9	60	10 x 5
MX0009	20 x 6	0.9	1.2	F	1200 x 2400	A2060912F	2.9	60	15 x 5
MX0012	30 x 12	1.2	2.2	F	1200 x 2400	A30121222F	3.5	63	27 x 9
MX0018	40 x 18	1.2	2.5	F	1200 x 2400	A401812250F	2.7	72	35 x 14
MX0023	50 x 24	3.0	4.3	F	1200 x 2400	A50243043F	8.8	64	43 x 18

Alipac (all prices exclude GST & Freight)

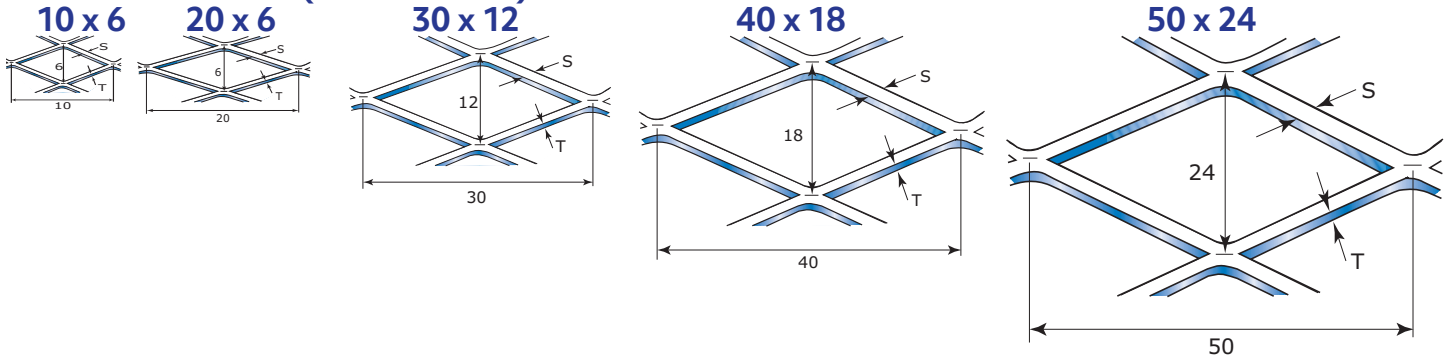
Item#	Size	Thickness	Strand	Flat/ Raised	Sheet Size	Part No	Weight	% Open Area	Opening Size approx
MX0028	6 x 3	0.7	0.8	R	800 x 400	AP063	0.3	47	3 x 1
MX0029	10 x 6	0.9	1.2	R	800 x 400	AP106	1	60	7 x 4
MX0030	20 x 6	0.9	1.2	R	800 x 400	AP206	1	60	15 x 5
MX0031	30 x 12	1.2	2.2	R	800 x 400	AP3012	1.1	63	27 x 9

316L Stainless Steel (all prices exclude GST & Freight)

Item#	Size	Thickness	Strand	Flat/ Raised	Sheet Size	Part No	Weight	% Open Area	Opening Size approx
MX0096	20 x 8	1.0	1.2	R	1200 x 2400	S20081012S	7.5	75	15 x 7
MX0096/2	20 x 8	1.0	1.2	R	1200 x 1200	S20081012R	3.75	75	15 x 7

Price version January 2021

Mesh Actual Sizes (A3 Printout)



Please contact our Auckland sales office for this product:

Unit 1, 23 Druces Rd, Manukau, Auckland 104, New Zealand

Ph: +64 9 262 4474

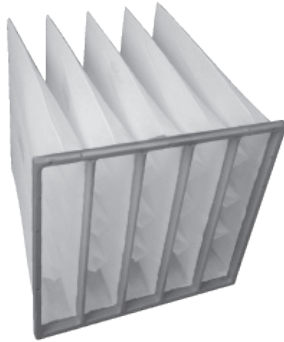
Auckland.sales@windsor.co.nz

New Zealand | Australia | USA

windsor.co.nz

Other products

Air Filters



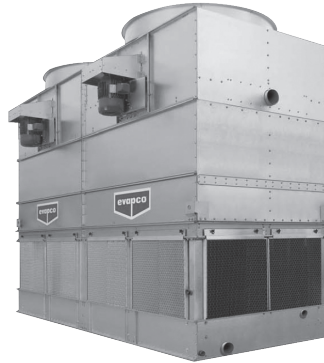
Air filtration

- Activated Carbon
- Air Conditioning Filters
- Bag Filters
- Clean Rooms
- Gas Filtration
- HEPA Filters,
- Intake Filters

Air movement

- Blowers & Gas Boosters
- Dampers & Flow Control
- Fibreglass Fans
- Industrial Fans
- Process Fans
- Side Channel Blowers

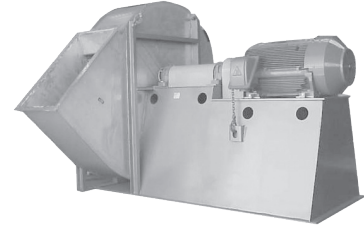
Cooling Towers



Environmental control

- Bag Filters
- Cartridge Filters
- Cooling Towers
- Cyclones
- De-Humidifiers
- Dust Collectors
- Evaporative Cooling Systems
- Fluid Strainers
- Heat Exchangers
- Heat Recovery Systems
- Odour Control
- Scrubbers

Industrial Fans



Measurement & instrumentation

- Flow & Pressure Instruments
- Hand held pressure measurement

Instruments

- IR Temperature Instruments

Design & consulting services

- Specifically in relation to our expertise in air movement, filtration, humidity control, dust collection

Please contact our Auckland sales office for this product:

Unit 1, 23 Druces Rd, Manukau, Auckland 104, New Zealand

Ph: +64 9 262 4474

Auckland.sales@windsor.co.nz

New Zealand | Australia | USA