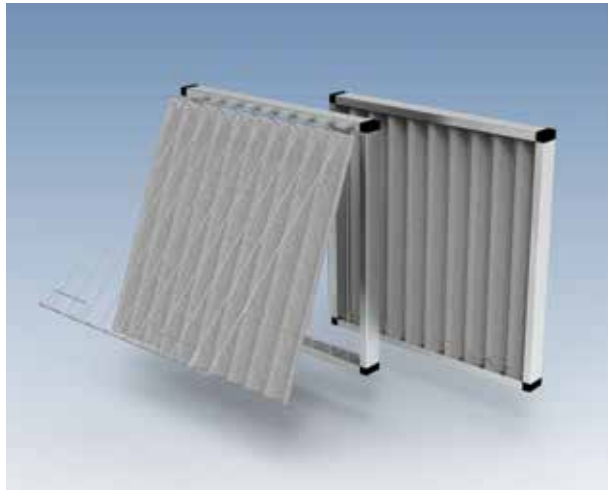


Panel Filter Range



Flat Panel - AL50 Series

ISO Coarse 40% - ISO Coarse 75% ISO 16890 / G2 - G4 EN779:2012



Applications

- Primary or secondary stage filters
- Intake filters
- HVAC for offices, shopping malls
- Dairy factories, hospitals, food processing, factories
- Anywhere where service life of flat panel needs extending

Special Features

- Longer service life compared to flat panel
- Plastic corners allow easy slide into channel frames
- Filters seal well against each other, lessening bypass
- Economical to freshen - just replace media pack only
- Washable several times
- The media is secured into the frame with a 3mm stainless steel wire gate

All our filter media meets the new more realistic ISO16890 classification standard for filtration, which means that you can help reduce your energy bill by selecting filters with a lower pressure drop.

Construction

Lightweight yet robust aluminium frame filter with washable and replaceable media mat helps save money in replacements and servicing cost.

Mats can be washed or changed at the end of service life without disposing of the frame. The AL50R features stainless steel removable wire supports for the media mat for extra strength and durability.

Performance Data

| Media | Nominal face velocity m/s | Flow Rate l/s - ΔP for given size | | |
|---------|---------------------------|-----------------------------------|----------|---------------|
| | | 595x595 | 595x295 | Final ΔP (Pa) |
| Poly150 | 1.5 | 530 - 20 | 265 - 20 | 250 |
| Poly200 | 1.5 | 530 - 27 | 265 - 20 | 250 |
| Poly300 | 1.5 | 530 - 40 | 265 - 20 | 250 |
| Poly150 | 2.5 | 885 - 27 | 885 - 27 | 250 |
| Poly200 | 2.5 | 885 - 46 | 885 - 46 | 250 |
| Poly300 | 2.5 | 885 - 70 | 885 - 70 | 250 |

Standard Sizes Available

- 595 x 595 x 48
- 595 x 295 x 48
- 495 x 495 x 48
- 595 x 295 x 48

Auckland + 64 9 262 4474
Christchurch + 64 3 366 1411
windsor.sales@windsor.co.nz

windsor.co.nz