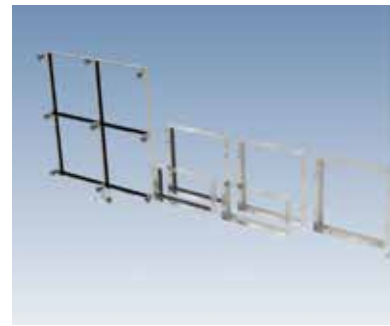
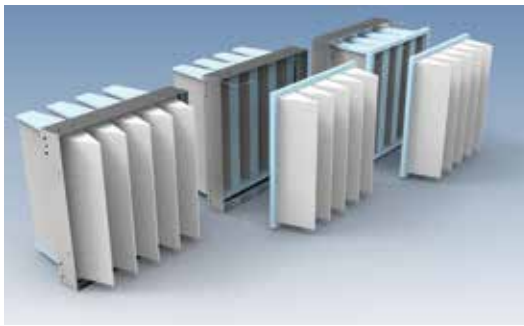
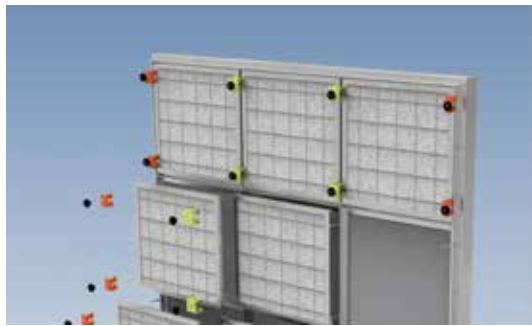




Making filtration easy for our customers applications



Use our fully compliant ISO 16890 media for low pressure drop and long service life for extracting maximum economy from your air handling or ventilation system.

We offer a well thought out range of stainless steel holding frames for air filters that you can select for any application and/or installation where 'face-fitting' configuration is required.

Our range of stainless steel filter frames is designed to work with all our standard filters providing secure sealing and easy access to the filters for maintenance.

Auckland + 64 9 262 4474
Christchurch + 64 3 366 1411
windsor.sales@windsor.co.nz

windsor.co.nz



Filter Media & Frames



World leading quality filtration



Quality filters media designed for long life and low pressure drops to save energy .

All our medias meet the latest ISO 16890 standards which represent a more realistic test procedure for classifying filtration performance.

Applications

- Industrial HVAC air intakes.
- Ventilation systems.
- Machine rooms.
- Chemical and pharmaceuticals.
- Dairy industry, food industry
- Turbomachinery

POLY-100 Media series - ISO Coarse 40% ISO 16890 / G2 EN779:2012



Description	Roll Width A mm	Roll Length B m	Roll T mm	Media Grade	Media area m ²	m ³ /hr / Pa
POLY-100	2000	20	6	G2	40	5400/20

Applications

Primary filtration for air treatment in ventilation and air conditioning.

Features

Efficiency: ISO Coarse 40% ISO16890 / G2 EN779:2012
 Media: Thick synthetic with progressive density
 Final pressure drop : 250 Pa
 Maximum T° in continuous service : 110 °C
 Humidity : 100 % RH

- Windsor cutting service
- Low pressure drop
- Mechanical resistance
- Progressive density
- High retention power

POLY-150, POLY-80M1, POLY-200 Media series - ISO Coarse 50% ISO 16890 / G3 EN779:2012



Applications

Primary filtration for air treatment in ventilation and air conditioning.

Features

Efficiency: ISO Coarse 65% ISO16890 / G4 EN779:2012
 Media: Thick synthetic with progressive density
 Final pressure drop : 250 Pa
 Maximum T° in continuous service : 110 °C
 Humidity : 100 % RH

- Windsor cutting service
- Low pressure drop
- Mechanical resistance
- Progressive density
- High retention power

Filter Media & Frames



POLY-300, POLY-350 Media series - IePM10 50% ISO 16890 / M5 EN779:2012



Description	Roll Width A mm	Roll Length B m	Roll T mm	Media Grade	Media area m ²	m ² /hr / Pa
POLY-300	2000	20	20	M5	40	900/17
POLY-360	2000	20	30	M5	30	900/27

Applications

Primary filtration for air treatment in ventilation and air conditioning.

Features

Efficiency: ePM10 50% ISO16890 / M5 EN779:2012
 Media: Thick synthetic with progressive density
 Final pressure drop : 300 Pa
 Maximum T° in continuous service : 110 °C
 Humidity : 100 % RH

- Windsor cutting service
- Low pressure drop
- Mechanical resistance
- Progressive density
- High retention power

POLY-500, POLY-600 Media series - ePM 50% ISO 16890 / G4 EN779:2012



Description	Roll Width A mm	Roll Length B m	Roll T mm	Media Grade	Media area m ²	m ² /hr / Pa
POLY-500	2000	20	20	G4	40	5400/40
POLY-600	2000	20	22	G4	40	900/25
POLYCC-600	2000	20	22	M5	40	900/26
POLYCC-660	2000	20	25	M6	40	900/55

Applications

Primary filtration for media area treatment, car and furniture manufacture.

Features

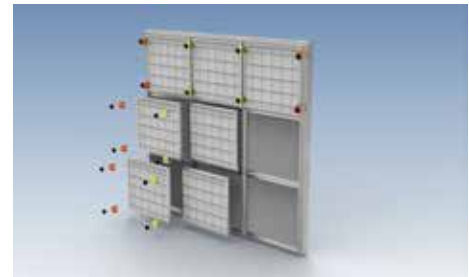
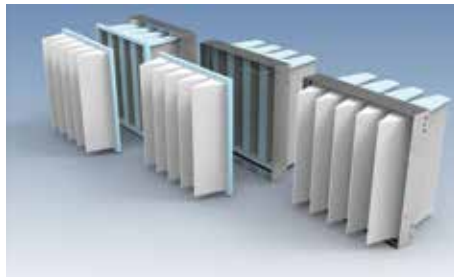
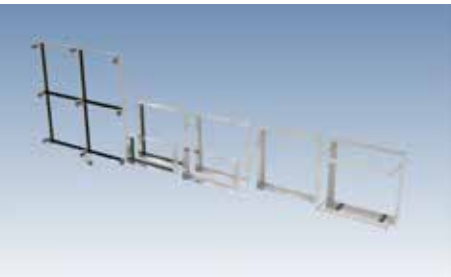
Efficiency: ePM10 50% ISO16890 / M6 EN779:2012
 Media: Thick synthetic with progressive density
 Final pressure drop : 450 Pa
 Maximum T° in continuous service : 100 °C / 120 °C
 Humidity : 100 % RH

- Windsor cutting service
- Long lifetime
- Low pressure drop
- High mechanical resistance
- Impregnation in the core of the media prevents any release of particles > 5 μ
- Reinforced media on clean air side, ensuring the media holding and stability through time
- Self-extinguishing media according to DIN 53438-F1 European standard, and UL900-class 1 American standard
- Approved by major car companies



Frames for all filters from panel filters to HEPA filters

Windsor offers a well thought out range of stainless steel holding frames for air filters that you can select for any application and/or installation where 'face-fitting' configuration is required.



CMFH series - for the budget minded



Features

- Low cost compared to alternatives
- 610 x 610 x 90 and 610 x 305 x 90 sizes only
- Integral poured one-piece gasket
- Multi-position swing clip to suit various filter or header frame thicknesses

SCHF - 1S series - single stage premium frame



Features

- Manufactured in NZ
- 610 x 610 x 90 and 610 x 305 x 90 sizes as standard other sizes on request
- Multi-position swing clip to suit various filter or header frame thicknesses and apply maximum sealing pressure



Two Stage filter frames & accessories

Use our convenient 2 stage filter frames for applications where there are more than one stage of filtration required, saving space and reducing labour cost involved in maintaining your filter banks.

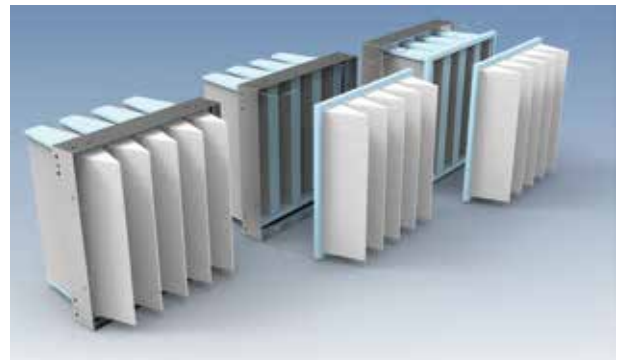
Both stages of filtration remain properly sealed within one integral filter mounting frame which can be conveniently welded or riveted into a filter bank or plenum. These mounting frames will hold all our normal filter designs.

SCHF - 2S series - two stage premium frame

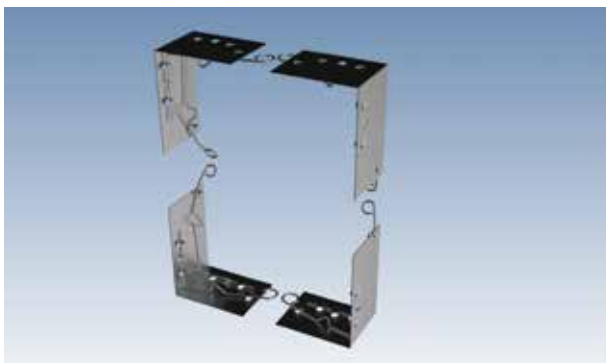


Features

- Holds a multitude of filter types in two stage arrangement within one frame
- 610 x 610 x 110 sizes standard
- Secondary filter remains tightly sealed and undisturbed when pre-filter is removed
- Specially designed left and right combinations of the swing clips make the tightly configured two stage sealing easy to achieve and work with
- Manufactured in NZ



2 stage L&R swing clip conversion plates



Features

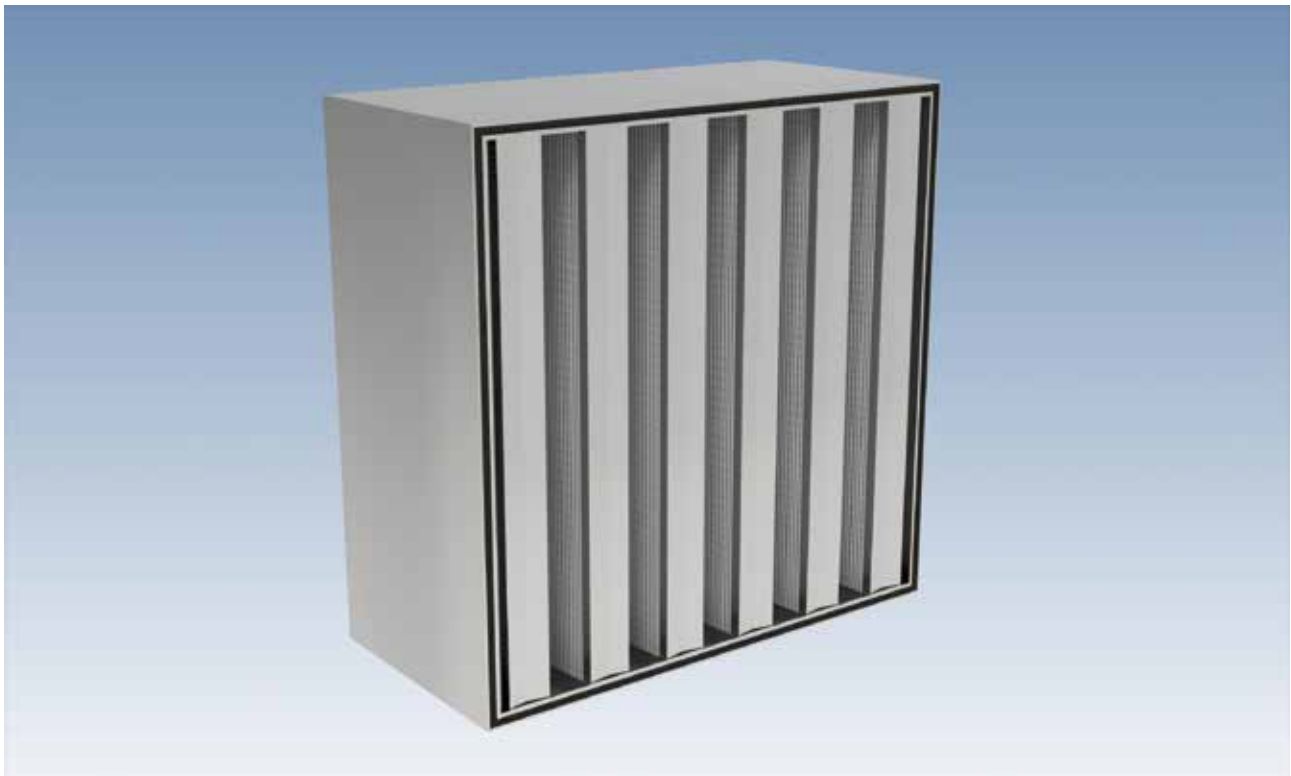
- Allows you to convert existing filter frames into 2 stage holding frames
- Weld or rivet to existing frames
- All the advantages provided by the premium 2 stage frame



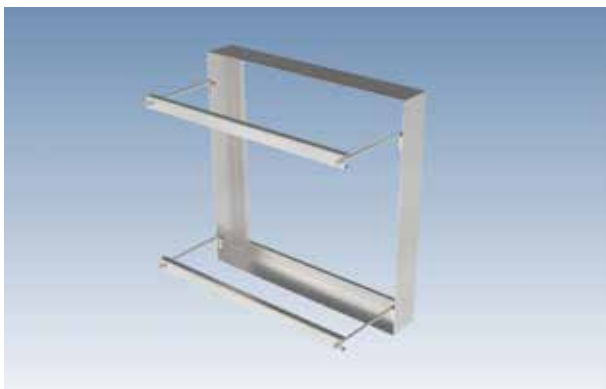
Heavy duty HEPA frames

Our heavy duty HEPA mounting frames provide secure and substantial sealed mounting for our HEPA filters for applications which require premium air filtration.

All HEPA filters require well designed rigid mounting frames to ensure that they are not racked or twisted during insertion and thus damaging the filters and negating their effect.



Heavy duty HEPA frames - Special features



Features

- 2.0mm thick fully welded construction
- Choice of type 304 or 316 stainless steel
- Substantial flange on sealing face to ensure rigidity, thus providing the ideal flat surface to obtain 100% seal of the HEPA element
- Removable clamps rods ensure that plenty of space is left to guide the HEPA into place and avoid damage. The clamp rod is very easy to locate in its holder
- Substantial clamp bar allows the right amount of pressure to be applied to gain 100% HEPA seal and double nuts ensure the clamp will not ease pressure throughout service life
- Refer separate brochure



D Mount System

The D Mount system was developed initially to enable conversion of filter frames that used 'P clips for retaining and sealing, to a more secure system that guaranteed the integrity of the installation.

Nowadays, even new installation utilise this novel filter fitting method.

The components are welded into place or can be pop-riveted where welding is not an option.

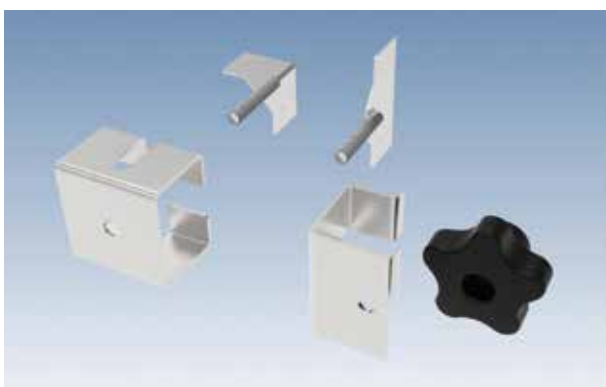
D Mount



Features

- Fits awkward corners
- Maximum pressure on the filter or its header to ensure 100% sealing between the filter gasket and frame
- Allows a variety of pre and secondary filters to be used in combination or simply hold a single stage flat or pleated panel

D Mount components



Features

- Made in NZ
- A variety of thread depths available to suit the filter types and the application
- 304 or 316 stainless steel construction of brackets and stud plates
- The most economical means to convert from P clip system to a more secure mounting system

Filter Media & Frames



Auckland + 64 9 262 4474
Christchurch + 64 3 366 1411
windsor.sales@windsor.co.nz