

Pocket Filter Range



Use our ISO 16890 rated filters for more realistic filter performance



Use our fully compliant ISO 16890 pocket filters for low pressure drop and long service life for extracting maximum economy from your air handling or ventilation system.



Auckland + 64 9 262 4474
Christchurch + 64 3 366 1411
windsor.sales@windsor.co.nz

windsor.co.nz

 **Windsor**
Engineering

Pocket Filter Range



World leading quality filtration

Quality pocket filters designed for long life and low pressure drops to save energy .

All our pocket filters meet the latest ISO 16890 standards which represent a more realistic test procedure for classifying filtration performance.

Applications

- Industrial HVAC air intakes.
- Ventilation systems.
- Machine rooms.
- Chemical and pharmaceuticals.
- Dairy industry, food industry
- Turbomachinery

FP40 series

- ISO Coarse 65% ISO 16890 / G4 EN779:2012

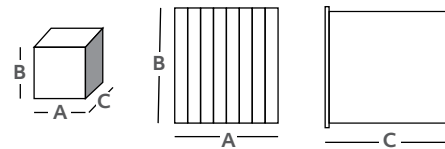
Efficiency: ISO Coarse 65% ISO16890 / G4 EN779:2012
 Media: Thick synthetic with progressive density
 Final pressure drop : 250 Pa
 Maximum T° in continuous service : 80 °C
 Humidity : 100 % RH

- High dust holding capacity
- Low pressure drop
- Conical self-supporting pockets
- Variant in plastic frame (SECURE) upon request
- Economic
- Tested for food contact according to CE 1935/2004
- Certified for microbial development (ISO 846-VD 6022)



Performance

Description	Width A mm	Height B mm	Depth C mm	# Pockets	Media area m ²	m ² /hr / Pa
FP40-6/600/06	592	592	600	6	4.3	3400/30
FP40 - 5/600/05	490	592	600	5	3.9	2800/30
FP40 - 3/600/03	287	592	500	3	2.3	1700/30
FP40 - 6/360/06	592	592	360	6	2.5	3400/37
FP40 - 5/360/06	490	592	360	5	2.4	2800/37
FP40 - 3/360/03	287	592	360	3	1.4	1700/37



Pocket Filter Range



FP50 series

- ISO Coarse 70% ISO 16890 / M5 EN779:2012

Efficiency: ISO Coarse 70% ISO16890 / M5 EN779:2012

Media: Thick synthetic with progressive density

Final pressure drop: 250 Pa

Maximum T° in continuous service: 80°C

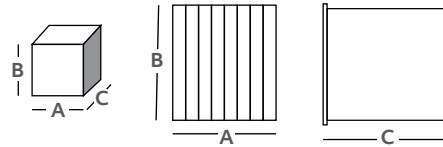
Humidity: 100% RH

- High dust holding capacity
- Low pressure drop
- Conical self-supporting pocket
- Variant in plastic frame (SECURE) upon request
- Easy to place
- Tested for food contact according to CE 1935/2004



Performance

Description	Width A mm	Height B mm	Depth C mm	# Pockets	Media area m ²	m ³ /hr / Pa
FP50 - 6/635/08	592	592	635	8	6.0	3400/35
FP50 - 5/635/06	490	592	635	6	4.5	2800/35
FP50 - 6/635/04	287	592	635	4	3.0	1700/35
FP50 - 6/600/06	592	592	600	6	4.3	3400/40
FP50 - 5/600/05	490	592	600	5	3.5	2800/40
FP50 - 3/600/03	287	592	600	3	2.3	1700/40
FP50 - 6/500/06	592	592	500	6	3.6	3400/32
FP50 - 5/500/05	490	592	500	5	3.0	2800/32
FP50 - 3/500/03	287	592	500	3	1.8	1700/32
FP50 - 6/360/06	592	592	360	6	2.5	2000/25
FP50 - 5/360/05	490	592	360	5	2.1	1650/25
FP50 - 3/360/03	287	592	360	3	1.3	1000/25



Pocket Filter Range



KP series

- ePM2.5 70% ISO 16890, F8 - ePM1 70% ISO 16890 / F7, F8 EN779:2012

Efficiency: ePM2.5, ePM1 70% ISO16890 / F7, F8 EN779:2012
 Media: Thick synthetic with progressive density
 Final pressure drop: 250 Pa
 Maximum T° in continuous service: 80°C
 Humidity: 100% RH

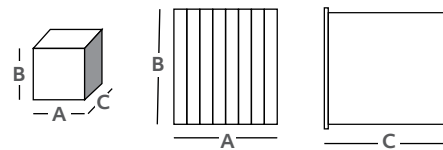
- High dust holding capacity
- Low pressure drop
- Conical self-supporting pocket
- Variant in plastic frame (SECURE) upon request
- Easy to place
- Tested for food contact according to CE 1935/2004



Performance

Description ePM2.5 70% ISO16890 / F7	Width A mm	Height B mm	Depth C mm	# Pockets	Media area m ²	m ³ /hr / Pa
KP85- 6/635/10	592	592	635	10	7.5	3400/90
KP85- 5/635/08	490	592	635	8	6.0	2800/90
KP85- 3/635/05	287	592	635	5	3.8	1700/90
KP85- 6/635/08	592	592	635	8	6.0	3400/100
KP85- 5/635/06	490	592	635	6	4.5	2800/100
KP85- 3/635/04	287	592	635	4	3.0	1700/100
KP85- 6/635/06	592	592	635	6	4.5	3400/125
KP85- 5/635/05	490	592	635	5	3.8	2800/125
KP85- 3/635/03	287	592	635	3	2.3	1700/125
KP85- 6/535/08	592	592	535	8	5.1	3400/124
KP85- 5/535/06	490	592	535	6	3.8	2800/124
KP85- 3/535/04	287	592	535	4	2.5	1700/124
KP85- 6/535/06	592	592	535	6	3.8	3400/147
KP85- 5/535/05	490	592	535	5	3.2	2800/147
KP85- 3/535/03	287	592	535	3	1.9	1700/147
KP85- 6/380/08	592	592	380	8	3.6	2000/84
KP85- 5/380/06	490	592	380	6	2.7	1500/86
KP85- 3/380/04	287	592	380	4	1.8	1000/86

Description ePM1 70% ISO16890 / F8	Width A mm	Height B mm	Depth C mm	# Pockets	Media area m ²	m ³ /hr / Pa
KP95- 6/635/10	592	592	635	10	7.5	3400/139
KP95- 5/635/08	490	592	635	8	6.0	2800/139
KP95- 3/635/05	287	592	635	5	3.8	1700/139
KP95- 6/635/08	592	592	635	8	6.0	3400/145
KP95- 5/635/06	490	592	635	6	4.5	2800/145
KP95- 3/635/04	287	592	635	4	3.0	1700/145
KP95- 6/635/06	592	592	635	8	5.1	3400/165
KP95- 5/635/06	490	592	635	6	3.8	2800/165
KP95- 3/635/04	287	592	635	4	2.5	3400/165



Pocket Filter Range



NW series

- ePM10 55%, ePM1 50%, ePM1 60%, ePM1 70%, ePM1 90% ISO16890 / M6, F7, F8, F9 EN779:2012

Efficiency following ISO16890: 2016
 Media: Thick synthetic with progressive density
 Final pressure drop: 250 Pa
 Maximum T° in continuous service: 80°C
 Humidity: 100% RH

- High dust holding capacity
- Low pressure drop
- Conical self-supporting pocket
- Variant in plastic frame (SECURE) upon request
- Easy to place
- Tested for food contact according to CE 1935/2004

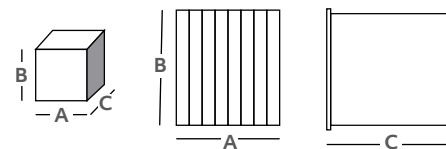


Performance

Description ePM10 55% ISO16890 / M6	Width A mm	Height B mm	Depth C mm	# Pockets	Media area m ²	m ³ /hr / Pa
NW65-6/635/10	592	592	635	10	7.5	3400/47
NW65-5/635/08	490	592	635	8	6.0	2800/47
NW65-6/635/05	287	592	635	5	3.8	1700/47
NW65-6/635/08	592	592	635	8	6.0	3400/48
NW65-5/635/06	490	592	635	6	4.5	2800/48
NW65-3/635/04	287	592	635	4	3.0	1700/48
NW65-6/535/10	592	592	535	10	6.3	3400/50
NW65-5/535/08	490	592	535	8	5.0	2800/50
NW65-3/535/05	287	592	535	5	3.2	1700/50
NW65-6/535/08	592	592	535	8	5.1	3400/50
NW65-5/535/06	490	592	535	6	3.8	2800/50
NW65-3/535/04	287	592	535	4	2.5	1700/50

Description ePM1 50% ISO16890 / F7	Width A mm	Height B mm	Depth C mm	# Pockets	Media area m ²	m ³ /hr / Pa
NW80-6/635/10	592	592	635	10	7.5	3400/80
NW80-5/635/08	490	592	635	8	6.0	2800/80
NW80-3/635/05	287	592	492	5	3.8	1700/80
NW80-6/635/08	592	592	635	8	6.0	3400/92
NW80-5/635/06	490	592	635	6	4.5	2800/92
NW80-3/635/04	287	592	635	4	3.0	1700/92
NW80-6/535/10	592	592	535	10	6.3	3400/100
NW80-5/535/08	490	592	535	8	5.0	2800/100
NW80-3/535/05	287	592	535	5	3.2	1700/100

Description ePM1 60% ISO16890 / F7	Width A mm	Height B mm	Depth C mm	# Pockets	Media area m ²	m ³ /hr / Pa
NW85-6/635/08	592	592	635	8	6.0	3400/74
NW85-5/635/06	490	592	635	6	4.5	2800/74
NW85-3/635/04	287	592	635	4	3.0	1700/74
NW85-6/635/10	592	592	635	10	7.5	3400/74
NW85-5/635/08	490	592	635	8	6.0	2800/74
NW85-3/635/05	287	592	635	5	3.8	1700/74
NW85-6/535/10	592	592	535	10	6.3	3400/74
NW85-5/535/08	490	592	535	8	5.1	2800/74
NW85-3/535/05	287	592	535	5	3.2	1700/74
NW85-6/535/08	592	592	535	8	5.1	3400/85
NW85-5/535/06	490	592	535	6	3.8	2800/85
NW85-3/535/04	287	592	535	4	2.5	1700/85



Description ePM1 70% ISO16890 / F8	Width A mm	Height B mm	Depth C mm	# Pockets	Media area m ²	m ³ /hr / Pa
NW95-6/635/10	592	592	635	10	7.5	3400/74
NW95-5/635/08	490	592	635	8	6.0	2800/74
NW95-3/635/05	287	592	635	5	3.8	1700/74
NW95-6/635/08	592	592	635	8	6.0	3400/81
NW95-5/635/06	490	592	635	6	4.5	2800/81
NW95-3/635/04	287	592	635	4	3.0	1700/81
NW95-6/535/10	592	592	535	10	6.3	3400/81
NW95-5/535/08	490	592	535	8	5.1	2800/81
NW95-3/535/05	287	592	535	5	3.2	1700/81

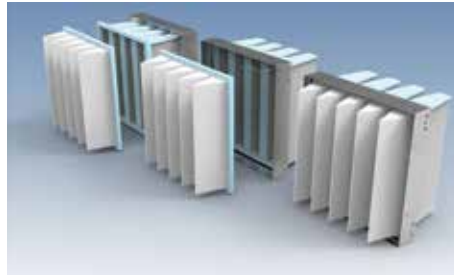
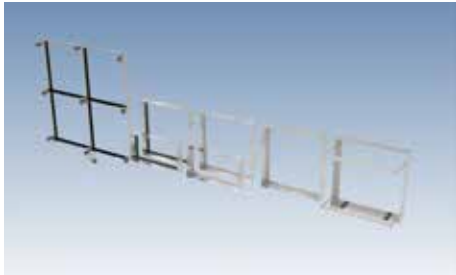
Description ePM1 90% ISO16890 / F9	Width A mm	Height B mm	Depth C mm	# Pockets	Media area m ²	m ³ /hr / Pa
NW98-6/635/10	592	592	635	10	7.5	3400/118
NW98-5/635/08	490	592	635	8	6.0	2800/118
NW98-3/635/05	287	592	635	5	3.8	1700/118
NW98-6/635/08	592	592	635	8	6.0	3400/119
NW98-5/635/06	490	592	635	6	4.5	2800/119
NW98-3/635/04	287	592	635	4	3.0	1700/119
NW98-6/535/10	592	592	535	10	6.3	3400/147
NW98-5/535/08	490	592	535	8	5.1	2800/147
NW98-3/535/05	287	592	535	5	3.2	1700/147
NW98-6/535/08	592	592	535	8	5.1	3400/155
NW98-5/535/06	490	592	535	6	3.8	2800/155
NW98-3/535/04	287	592	535	4	2.5	1700/155

Pocket Filter Range



Frames for all filters from panel filters to HEPA filters

Windsor offers a well thought out range of stainless steel holding frames for air filters that you can select for any application and/or installation where 'face-fitting' configuration is required.



CMFH series - for the budget minded



Features

- Low cost compared to alternatives
- 610 x 610 x 90 and 610 x 305 x 90 sizes only
- Integral poured one-piece gasket
- Multi-position swing clip to suit various filter or header frame thicknesses

SCHF - 1S series - single stage premium frame



Features

- Manufactured in NZ
- 610 x 610 x 90 and 610 x 305 x 90 sizes as standard other sizes on request
- Multi-position swing clip to suit various filter or header frame thicknesses and apply maximum sealing pressure

Pocket Filter Range



Two Stage filter frames & accessories

Use our convenient 2 stage filter frames for applications where there are more than one stage of filtration required, saving space and reducing labour cost involved in maintaining your filter banks.

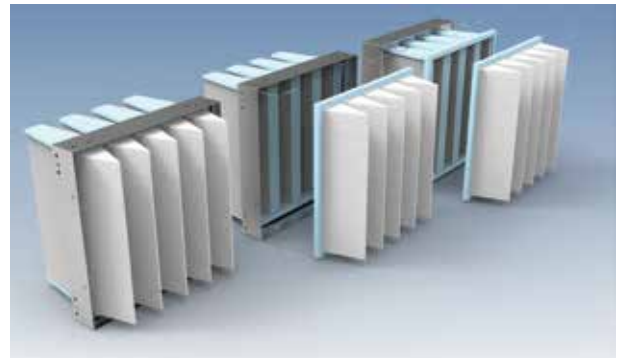
Both stages of filtration remain properly sealed within one integral filter mounting frame which can be conveniently welded or riveted into a filter bank or plenum. These mounting frames will hold all our normal filter designs.

SCHF - 2S series - two stage premium frame

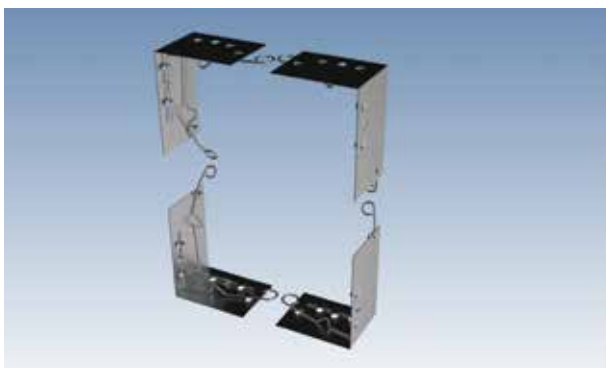


Features

- Holds a multitude of filter types in two stage arrangement within one frame
- 610 x 610 x 110 sizes standard
- Secondary filter remains tightly sealed and undisturbed when pre-filter is removed
- Specially designed left and right combinations of the swing clips make the tightly configured two stage sealing easy to achieve and work with
- Manufactured in NZ



2 stage L&R swing clip conversion plates



Features

- Allows you to convert existing filter frames into 2 stage holding frames
- Weld or rivet to existing frames
- All the advantages provided by the premium 2 stage frame

Pocket Filter Range



Other products available

- Filter media
- Panel filters
- Pocket filters
- Rigid filters
- Filter mounting frames
- HEPA filters
- Specialised filter housings & arrays
- Odour & corrosion control systems

Auckland + 64 9 262 4474
Christchurch + 64 3 366 1411
windsor.sales@windsor.co.nz